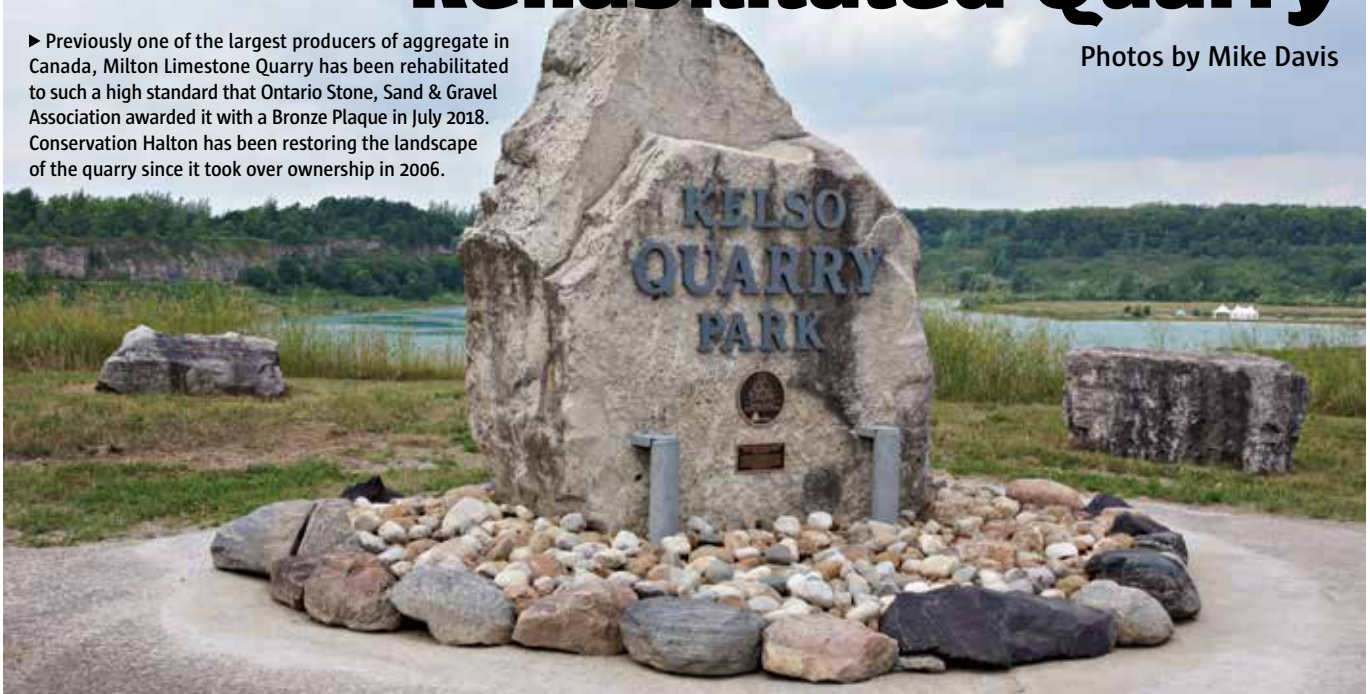


# Conservation Halton's Rehabilitated Quarry

Photos by Mike Davis

► Previously one of the largest producers of aggregate in Canada, Milton Limestone Quarry has been rehabilitated to such a high standard that Ontario Stone, Sand & Gravel Association awarded it with a Bronze Plaque in July 2018. Conservation Halton has been restoring the landscape of the quarry since it took over ownership in 2006.



◀ The new Kelso Quarry Park includes a section of the protected Niagara Escarpment cliff face, and an old-growth forest of 1,000-year-old cedars.



▲ New wetlands have been nurtured to provide habitat for fish, although invasive phragmites are already taking hold with long rhizomes running across the shore to the water.

◀ Part of the Bronze Plaque award to Kelso Quarry Park.

**PRESENTED TO CONSERVATION HALTON TO ACKNOWLEDGE THEIR CONTRIBUTION, IN PARTNERSHIP WITH THE TOWN OF MILTON, TO THE REHABILITATION OF KELSO QUARRY PARK.**

**THIS AWARD RECOGNIZES CONSERVATION HALTON'S COMMITMENT TO TRANSFORMING A FORMER QUARRY, WITHIN THE NIAGARA ESCARPMENT PLAN AREA, INTO A NATURALIZED AREA WITHIN HALTON REGION'S NATURAL HERITAGE SYSTEM THAT ENHANCES VISITOR EXPERIENCE IN NATURE AND PROTECTS SENSITIVE CONSERVATION LANDS.**